



## **DRIVING OUR FUTURE**

### **Congratulations on taking the first step to becoming a safe driver!**

#### **IMPORTANT – PLEASE READ CAREFULLY**

Our software will keep you involved as you learn all the skills you need to be a successful motorist on today's busy streets and highways. Remember, safety first!  
Good luck.

#### **SimuRide Home Edition Automatic Installation**

1. Start Windows.
2. Insert the SIMURIDE H.E. – Driving Simulation Disc into your DVD drive.
3. The SIMURIDE H.E. “Select Language” screen should appear in 5 to 10 seconds.
4. Select language preference. All files will automatically install into <C:/SimuRideHE>.

When the SIMURIDE H.E. set-up screen closes, the “SimuRideManual.pdf” will be displayed. Please carefully read these instructions on how to install, set up and operate the program. Before you start the program, you will have to connect and install the steering wheel to your PC, then manually assign the simulator functions to the steering wheel's pedals.

#### **Steering Wheel Windows Installation**

There are many different steering wheel manufacturers; the hardware is configured to the manufacturers particular specifications. For example, some steering wheels may only have 2 pedals and 2 buttons where others can have 3 pedals and 8 buttons supported by two tabs behind the wheel.

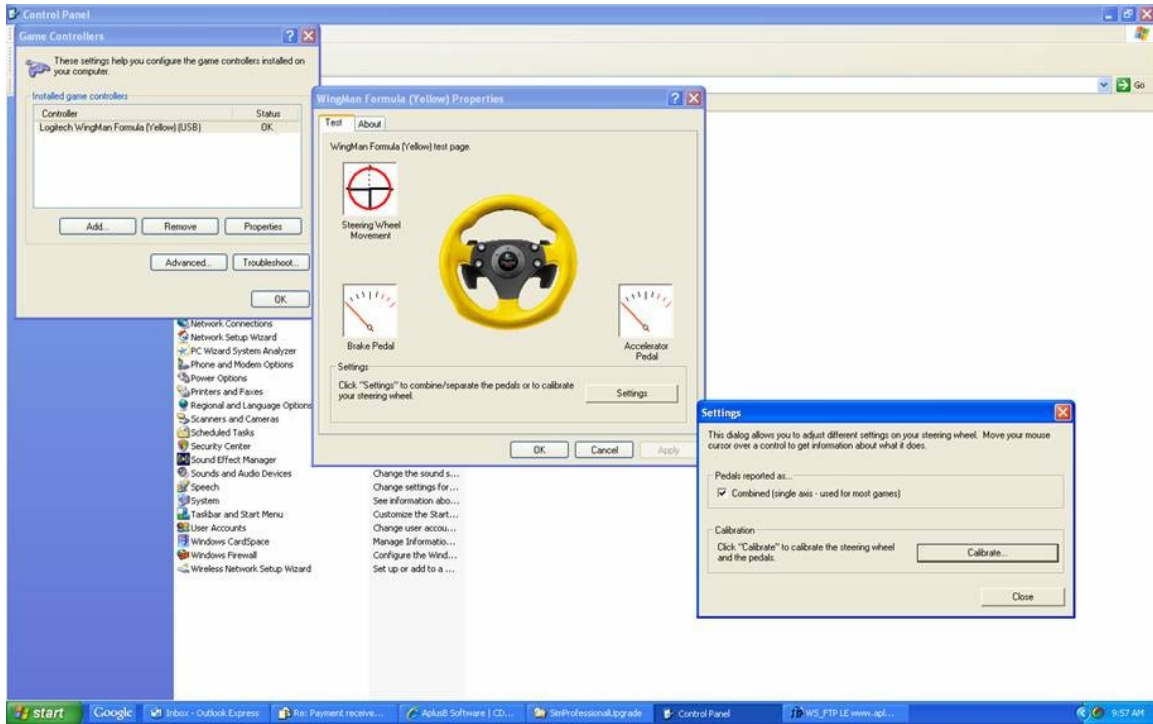
When you are installing the steering wheel always follow the manufacturer's instructions. The following is just an example on how to install the simple Steering Wheel in Windows:

- 1) Plug your steering wheel into your computer's USB port.
- 2) Follow the on screen instructions to install new hardware; if you already have a steering wheel installed then skip this process.
- 3) Go to Start → Control Panel → Game Controller.

**WARNING: Software is intended for individual use only;  
the commercial version of this product is available for purchase.**

- 4) Select “Your Steering Wheel”.
- 5) Go to “Properties → Setting”.
- 6) Check if the steering wheel is properly installed; eventually calibrate it in Windows (follow on screen instructions).

The steering wheel properties can be found by clicking on Start → Control Panel → Game Controller and should look similar to the image on the following page.



## Steering Wheel SimuRide Configuration

The following is a listing of the basic steps for configuring the Steering Wheel set with the SIMURIDE H.E..

Please note that we have already predefined fifteen controls and have provided keyboard shortcuts (except 2 pedals) for necessary functions to operate the SimuRide. Two pedals have to be defined manually; otherwise you will be not able to operate the simulator.

You also have an option to define all steering wheel controls by yourself and overwrite the default. To define pedals and/or assign your own steering wheel functions, please click on “Start” → “All Programs” → “A+B Software” folder > Steering Wheel Configuration and follow the on screen instructions.

**WARNING: Software is intended for individual use only;  
the commercial version of this product is available for purchase.**

It is very convenient to assign as much as you can your steering wheel's controls to the SimuRide functions that you will use more often (such as your right and left side pan views, your right and left turn indicators, etc); the rest of the functions can be accessed from your keyboard.

For example with only 2 buttons in your steering wheel, we recommend setting the right and left side views to these buttons. Users should be able to easily execute security checks (blind spots) for the other vehicles. If you have four buttons steering wheel, set first the right and left side views and left/right turn signals to your steering wheel's buttons.

As previously mentioned, you can assign your own keyboard's shortcuts for the menu, ignition, starter, emergency brake, seat belt and lights to easily recognized characters on your keyboard. At any time, you can "Skip" one process or go back to the "Default".

**NOTE: IT IS IMPORTANT THAT YOU ONLY USE ALPHABETICAL CHARACTERS WHEN YOU ARE CONFIGURING THE STEERING WHEEL.**

**YOU CANNOT USE ANY OF THE FOLLOWING KEYS.**

- **ENTER CAN ONLY BE USED TO CONFIRM MAIN MENU.**
- **ARROW KEYS MUST BE USED AS INDICATED BELOW.**

By default, the shortcuts are (use only the alphabetical part of your keyboard):

- Arrow Left - Left Window View
- Arrow Right - Right Window View
- Left Ctrl - Left Turn Signal
- Right Ctrl - Right Turn Signal
- Page Up - Gear Shifter UP
- Page Down - Gear Shifter Down
- Enter – Menu/Confirm
- Arrow Up - Previous Item
- Arrow Down - Next Item
- Z – Ignition
- X – Starter
- S - Seat Belt
- B - Emergency Brake
- 1 - Low Beam Lights
- 2 - High Beam Lights

## **Display Resolution - Setting up**

1. To find your computer screen resolution please:

- For Windows 7 – right-click mouse on the desktop, select "Screen Resolution"

**WARNING: Software is intended for individual use only;  
the commercial version of this product is available for purchase.**

- For Windows XP - click Right Mouse on the desktop, select “**Properties**” then “**Settings**”;
- For Windows Vista - Open Display Settings by clicking the “**Start**” button, clicking “**Control Panel**”, clicking “**Appearance and Personalization**”, clicking “**Personalization**”, and then clicking “**Display Settings**”;and take note of your resolution setting.

2. Click on “**Start SimuRide HE**” on the Desktop or in the **Start Menu**.

3. The SimuRide main menu screen should appear in a few seconds. To navigate the menus, you can use either your keyboard Down/Up [arrows] and [Enter] keys or your Mouse.

4. In the SimuRide **Main Menu**, go to “**Settings**” then “**Display Resolution**” and select the appropriate resolution from the list. This must be the same as the Windows Display Resolution that was noted/selected in step # 1. It is important to note that there are different settings for Panoramic and non-panoramic monitors. If you do not find the resolution that match your Windows resolution, please select the resolution that is available in your Windows setting. To do this, take note of few closest resolutions available in the SimuRide Setting, close the SimuRide application, go to your Windows setting, select the resolution available in Windows setting that match one of the noted resolutions, Start the SimuRide and go for the resolution selected in Windows. Note this process is only required for the first use.

### **Using the SimuRide:**

To run the simulator, click the SimuRide shortcut on your desktop or click on “Start”→ “All Programs” → “A+B Software” folder → Start SimuRide.

At the SimuRide Menu page, click on the “**Vehicle**” button to select your vehicle. You have a choice between a regular passenger vehicle and a regular vehicle with a small trailer.

During each exercise the “**Report**” is created automatically. You may review this report to evaluate your performance in the exercise. Report shows a graphical analysis of the exercise and a list of errors made.

To see the next or previous fragment of your exercise please use the Right or Left directional buttons (left/right window view).

You can also modify some “**Settings**” as required:

**WARNING: Software is intended for individual use only;  
the commercial version of this product is available for purchase.**

- **Aerial View:** This option shows your vehicle from a bird's eye view to show your movements and position. This feature is enabled by default. If you become overly reliant on this view, and ignore the mirrors and windows, it should be disabled.
- **Display Pedals Value:** Choose if your gas and brake inputs should be displayed on screen.
- **Display On Screen Messages :** This is an ON/OFF option where you may choose to show messages for your mistakes and breaking the road rules during your practice.
- **Windowed:** Choose whether you will run the simulator as a Window or Full Screen (recommended for slower computers).
- **3D Acceleration:** This option strengthens your graphics card to work more effectively.
- **Quality/Processing Time:** This setting allows you to select the level of precision for your CPU. For slower/older computers, select a lower accuracy setting. For faster computers, select a higher accuracy setting. Setting the accuracy too high for your computer will result in poor performance.
- **Distance To Viewed Objects:** Selects how close objects must be before they become visible. For slower computers choose a shorter distance. For faster computers, choose a greater distance.
- **Lights Conversion:** If the light levels in the game seems to fluctuate (e.g.pressing the brake pedal), switch this setting to “Synchronized with Hardware.” This problem can be caused by certain graphics cards and drivers.

To begin the practice click on “**Start**”. It takes few seconds to load the application.

**When you start the first exercise, by default your virtual vehicle will be in the parking lot; this gives you a space to practice driving the car before you take it on the road. All following exercises, can be started in various areas of the virtual scenery.**

Using default setting (only if you did not configure your own control keys):

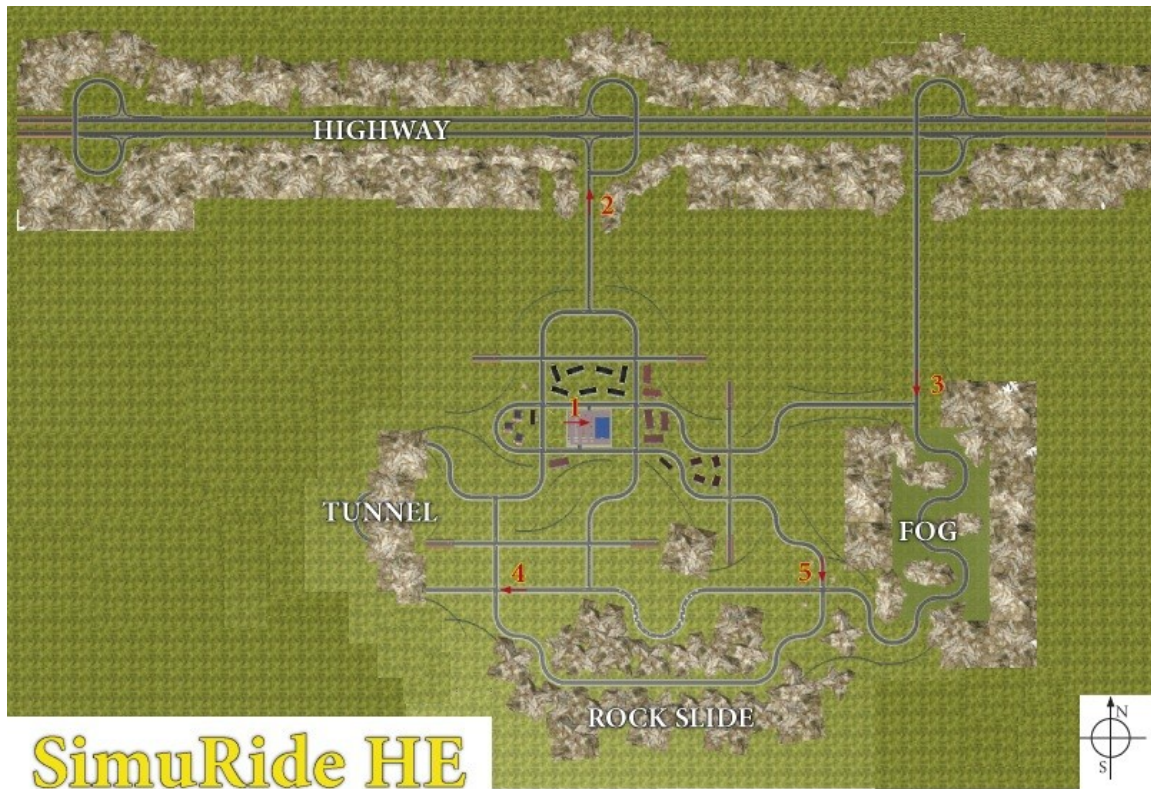
- Press “Z” to turn the ignition ON
- Press “X” to start the engine (it will start only on Parking or Neutral gear and the brake pedal must be applied)
- Press “B” to release the emergency brake
- Press “S” to fasten the seat belts
- Press “Page Down” (the keyboard key) 3 times until the car is put into “D” (Drive)
- Press “Page Up” to let you go back to the parking “P”; the “R” is reverse gear
- Press right pedal to drive and accelerate
- Press left pedal to brake the car

**Note:** Remember to use only one (right) leg to push the pedals and only one pedal at the same time.

**WARNING: Software is intended for individual use only;  
the commercial version of this product is available for purchase.**

- To see through the left or right window you must press the Left or Right directional button
- To see your left blind spot you must press the Left (hold it) and Right directional buttons at the same time; to see the right blind spot do opposite.
- Press 1 or 2 on top of your keyboard to turn (consecutively) the low and high beams ON/OFF
- Enjoy the exercise and do not forget to turn Lights ON/OFF approaching/leaving the tunnel or fog area.
- To finish the exercise and get back to main Menu you must press “Enter”. Use the Up/Down “Arrows” to select either “End of Practice” or “Restart Practice”. Confirm your choice using Up/Down “Arrow” and “Enter”. You can always get back to the exercise by choosing the “No” option.
- To Exit the program select “Exit” and confirm it.

The map on the next page will help you to navigate through the virtual scenery.



**WARNING: Software is intended for individual use only;  
the commercial version of this product is available for purchase.**

## FREQUENTLY ASKED QUESTIONS

Having trouble with your SimuRide? Before contacting us, please check here for a list of common problems and solutions.

If your question still is not answered, please contact us so that we can help you to get the most out of your SimuRide.

Q: After selecting my options and starting my exercise, all I can see is a blank screen and an error message; what should I do?

A: If this is the case, the display resolution in SimuRide does not match the resolution in Windows. You will have to close SimuRide using the Windows Task Manager, so press Ctrl+Alt+Delete, and then use the task manager to close SimuRide process. Follow the directions provided on “Display Resolution - Setting up“ of this manual to set up the appropriate screen resolution. Be sure that the resolution in Windows and in SimuRide match. If this does not resolve the error, please refer to the minimum system requirements to ensure that your computer's graphic card meets the requirements identified on the back of the SimuRIDEDVD case.

Q: My vehicle moves very slowly, not proportional to the speed showed on my speedometer; what should I do?

A: Please change the following settings: Setting / Windowed Full Screen / Full Screen without Screen Synchronization. Try also to reduce the **Quality/Processing Time and/or the Distance To Viewed Objects in the SimuRide Setting.**

Q: The entire environment images (houses and trees) move very slowly, not proportional to my speed; what should I do?

A: Please change the following settings: Settings / 3D-Acceleration for Hardware. If the above changes did not increase the speed also the solutions from the previous question. If you still do not see any improvement, your computer processor and/or graphics card are not sufficient and should be upgraded.

Q: Pressing the brake pedal causes the screen to darken; what should I do?

A: Please change the following settings: Settings → Lights Conversion and select “Synchronized with Hardware”.

***AplusB Software Corporation***  
***www.aplusbsoftware.com***

**WARNING: Software is intended for individual use only;  
the commercial version of this product is available for purchase.**